

# A retrospective study of clinicopathological features of oral squamous cell carcinoma with and without oral submucous fibrosis

Swetha Acharya<sup>1</sup>, Sartaz Rahman<sup>2</sup>, Kaveri Hallikeri<sup>1</sup>

<sup>1</sup>Department of Oral Pathology and Microbiology, SDMCDSh, Dharwad, <sup>2</sup>Department of Periodontics, BDCH, Davangere, Karnataka, India

## Abstract

**Context:** Oral submucous fibrosis (OSF) is strongly associated with areca nut usage; the existence of OSF in patients with oral squamous cell carcinoma (OSCC) is an indicator of areca nut-induced carcinogenesis. As areca nut follows a discrete molecular path for oral carcinogenesis, this could be the basis why OSCC patients with OSF are different and are currently projected to constitute a distinct clinicopathologic entity.

**Aim:** This study aims to analyze and compare the demographics, risk factors and clinicopathologic features of OSCC patients with and without OSF.

**Materials and Methods:** A retrospective review of OSCC cases treated in the institution from 2008 to 2013 was done. Sixty OSCC of buccal mucosa were selected, of which 30 were with concomitant OSF and 30 without OSF. Demographics, risk factors and clinicopathological features were studied. The data were analyzed by SPSS-20 software, using the Pearson Chi-square, Fisher's exact and Mann-Whitney U-tests.

**Results:** OSCC cases with OSF were younger (mean age 40.5 vs. 54 years) compared to those without OSF ( $P < 0.05$ ). Risk factors and other clinicopathological parameters did not differ between the two groups. There was significant difference in the two groups with regard to tumor differentiation ( $P = 0.000$ ). Tumors in OSCC with OSF were more likely to be well differentiated.

**Conclusion:** Although majority of OSCC patients with OSF were young with a better grade of tumor differentiation, other clinicopathologic features having prognostic significance did not differ significantly between the two groups. Therefore, OSCC arising in background OSF as a distinct entity is uncertain.

**Keywords:** Clinical characteristics, histopathologic characteristics, oral squamous cell carcinoma, risk factors, submucous fibrosis

**Address for correspondence:** Dr. Swetha Acharya, Department of Oral Pathology and Microbiology, SDMCDSh, Dharwad - 580 009, Karnataka, India.

E-mail: sbacharya@gmail.com

**Received:** 19.12.2017, **Accepted:** 08.01.2019

## INTRODUCTION

Oral submucous fibrosis (OSF) is a potentially malignant disorder of the oral cavity.<sup>[1]</sup> It is mainly associated with chewing of areca nut, an ingredient of betel quid,

and is prevalent in South Asian populations.<sup>[2]</sup> A high incidence of OSF is linked to areca chewing in the Indian subcontinents.<sup>[3,4]</sup> The areca nut alkaloid arecoline is now identified as a principal causative factor in OSF.<sup>[4]</sup>

Access this article online	
Quick Response Code:	Website: www.jomfp.in
	DOI: 10.4103/jomfp.JOMFP_275_17

This is an open access journal, and articles are distributed under the terms of the Creative Commons Attribution-NonCommercial-ShareAlike 4.0 License, which allows others to remix, tweak, and build upon the work non-commercially, as long as appropriate credit is given and the new creations are licensed under the identical terms.

**For reprints contact:** reprints@medknow.com

**How to cite this article:** Acharya S, Rahman S, Hallikeri K. A retrospective study of clinicopathological features of oral squamous cell carcinoma with and without oral submucous fibrosis. J Oral Maxillofac Pathol 2019;23:162.

OSF may cause atrophy in the epithelium, thus increasing the carcinogen penetration.<sup>[5]</sup> Arecoline is a desiccating agent and may shrink the cells enough to permit percolation of carcinogens through the epithelium to reach the basal layer, which is the dividing cell layer where neoplastic cellular transformation may occur. The permeability of the epithelium to carcinogens is a potent mechanism that may play a role in arecoline-related carcinogenesis.<sup>[6]</sup>

Studies suggest that dysplasia is seen in about 25% of biopsied OSF cases.<sup>[5]</sup> Epithelial dysplasia has been reported to occur in 7%–43% of OSF in different studies.<sup>[6]</sup> However, the rate of transformation to malignancy varies from 3% to 19%.<sup>[6,7]</sup> The incidence of oral squamous cell carcinoma (OSCC) concomitant with OSF was found to be 25.77% in a recent study from India, and it is evident that the malignant potential of OSF is underestimated.<sup>[8]</sup> Since areca nut follows a distinct molecular pathway for oral carcinogenesis, this could be the basis why patients with OSF-OSCC have different morphology, histology and biology.<sup>[3]</sup> In few studies on OSCC arising in the background of OSF, it was noted that patients with OSF-OSCC were younger males with better prognostic factors such as better grade of tumor differentiation, lesser incidence of nodal metastases and extracapsular spread (ECS).<sup>[1,3]</sup> Contradictory data stating that OSCC originated from OSF is clinically more invasive and also exhibits higher metastasis and recurrence rate than OSCC not originated from OSF have been reported from China.<sup>[9]</sup> Currently, it has been proposed that OSCC arising in OSF constitutes a clinicopathologically distinct disease; the differences of which are believed to arise from differential mechanisms of areca nut carcinogenesis.<sup>[3,10,11]</sup> Considering the controversy that exists in the literature regarding OSCC arising in the background of OSF and based on the proportion of OSCC-OSF reported during clinical practice in the institution motivated the authors of this study to analyze the demographics, risk factors and clinicopathologic features of OSCC occurring with and without OSF.

## MATERIALS AND METHODS

The study protocol was approved by the Institutional Ethics Committee SDMCDSh-IEC (IRB No: 2013/UG/OP/17). A retrospective review of OSCC cases treated in the institution during a 5-year period from 2008 to 2013 was done. Out of 537 OSCC cases reported in the institution, 60 OSCC (stage matched) cases primarily affecting the buccal mucosa were selected. Of which, thirty carcinomas occurring in the background of OSF and another thirty without OSF were chosen. An *a priori* testing was done to calculate the sample size. OSCC cases arising in OSF

background were selected based on the history and clinical features of OSF transforming into OSCC mentioned in the patient records. Parameters for analysis included demographics, risk factors, clinical details, clinical staging and histopathology.

Histopathological analysis included:

- Grading: Broder's grading, invasive front grading (IFG)<sup>[12]</sup> and Martinez–Gimeno score system (MGSS)<sup>[13]</sup>
- Tumor thickness (TT) measured using ocular micrometer: Microscopic TT was defined as the maximum TT excluding the keratin coat, taking the vertical extent of the tumor from the surface to its deepest extent in a perpendicular fashion<sup>[14]</sup>
- Lymph node metastasis (LNM); ECS; surgical margin status; Recurrence
- Sections obtained from surgical specimens of 30 OSCC-OSF were compared with 30 OSCC without OSF. In each case, all the parameters of IFG and MGSS were analyzed in detail and scored. The sum of the scores was used to decide the grade of the tumor or risk associated with metastasis.

## Inclusion criteria

Patients with untreated OSCC who reported to the institution from 2008 to 2013 were included in the study. These patients underwent surgical excision of the lesion along with neck dissection in the craniofacial unit of the institution from 2008 to 2013.

## Exclusion criteria

OSCC patients with multiple primaries and second primary; patients who were treated elsewhere before reporting to the institution; patients with preoperative chemotherapy or radiotherapy; patients with local resection without neck dissection; patients with previous malignancies in or outside the oral cavity and histologic variants of OSCC were excluded from the study.

## Source of data

Clinical details were obtained from the patient records on file from departmental database. Hematoxylin and eosin stained tissue sections were obtained from archives of department for histopathological analysis. All the sections were analyzed by two researchers who followed uniform criteria and were blinded to the final outcome. Before commencement of the principal study, a pilot study was carried out to assess inter- and intra-observer consistency for scoring the histopathological parameters.

## Statistical analysis

The data were tabulated and analyzed by SPSS 20.0 statistical software (IBM Corp., Armonk, NY, USA).

Frequency tables of categorical data were analyzed using the Pearson Chi-square test, Fisher's exact test and Mann–Whitney test. Probability level was fixed at <0.05.

## RESULTS

### Comparative analysis of clinicopathologic characteristics of oral squamous cell carcinoma with oral submucous fibrosis and without oral submucous fibrosis

Table 1 shows that OSCC cases with OSF were younger (mean age 40.5 vs. 54 years) compared with without OSF. There was no significant difference in the two groups with regard to various other clinical characteristics. Table 2 shows tumors in the OSCC without OSF group were more likely to be poorly differentiated (12 cases vs. nil) than those with OSF. Tumors in OSCC-OSF were more likely to be well differentiated [Figure 1]. There was significant difference in the two groups with regard to tumor differentiation ( $P = 0.000$ ). There was no significant difference in the two groups with regard to other pathologic features. LNM was seen in larger number of cases in OSCC without OSF than with OSF.

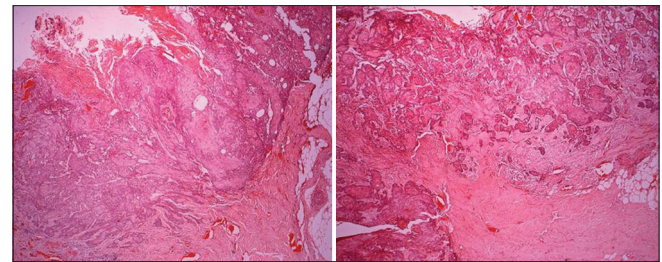
### Analysis of additional histopathologic prognosticators

Table 3 shows that of the 60 OSCC cases analyzed, 21% of cases had intravascular invasion (IVI), 47% cases

with perineural invasion (PNI) and 48% of cases were >3–7 mm thick. Only 18% of the tumors had uniform front (pushing, well defined) while 82% were showing infiltrating solid cords or small groups/marked and widespread cellular dissociation [Figure 2]. Mean (actual) TT in OSCC-OSF group was 6.9 mm and OSCC without OSF was 9.2 mm ( $P = 0.113$ ) [Figures 3 and 4].

### Clinicopathologic characteristics influencing lymph node metastasis

In the univariate analysis, it was observed that tumor extension, type, size, stage, tumor differentiation, MGSS score, TT, IVI and PNI emerged as significant factors associated with LNM ( $P < 0.05$ ) [Table 4]. Mean TT in pN +ve group was 10.8 mm and pN –ve was 7.3 mm ( $P = 0.001$ ).



**Figure 1:** Oral squamous cell carcinoma arising in the background of oral submucous fibrosis (H&E,  $\times 4$ )

**Table 1: Comparative analyses of demographic, risk factors and clinical characteristics between oral squamous cell carcinoma cases with oral submucous fibrosis and without oral submucous fibrosis**

Parameters	Category	OSCC		Total cases (%)	P
		With OSF (%)	Without OSF (%)		
Gender	Male	27 (45)	27 (45)	54 (90)	1.000
	Female	3 (5)	3 (5)	6 (10)	
Age (years)	$\leq 45$	23 (38.3)	8 (13.3)	31 (51.7)	<0.05
	>45	7 (11.7)	22 (37.3)	29 (48.3)	
Habits	No habits	0 (0)	3 (5)	3 (5)	0.137
	Tobacco areca nut chewing	24 (40)	17 (28)	41 (68)	
	Tobacco smoking	1 (2)	3 (5)	4 (7)	
	Combination of habits	5 (8)	7 (12)	12 (20)	
Duration of habits	0-0	0 (0)	3 (5)	3 (5)	0.117
	1-10	22 (37)	12 (20)	34 (57)	
	11-20	5 (8)	10 (17)	15 (25)	
	21-30	2 (3)	3 (5)	5 (8)	
	31-40	1 (1.6)	1 (1.6)	2 (3)	
	41-50	0 (0)	1 (2)	1 (2)	
Tumor extension	Single*	18 (30)	16 (27)	34 (57)	0.795
	Multiple**	12 (20)	14 (23)	26 (43)	
Tumor type	Exophytic	20 (33)	21 (35)	41 (68)	1.000
	Endophytic	10 (17)	9 (15)	19 (32)	
Tumor size (cm)	1 (<2)	8 (13)	3 (5)	11 (18)	0.226
	2 (2-4)	6 (10)	12 (20)	18 (30)	
	3 (>4)	7 (12)	6 (10)	13 (22)	
	4***	9 (15)	9 (15)	18 (30)	
Clinical stage	1	4 (7)	3 (5)	7 (12)	0.891
	2	6 (10)	7 (12)	13 (22)	
	3	10 (17)	8 (13)	18 (30)	
	4	10 (17)	12 (20)	22 (37)	

\*SCC of buccal mucosa only, \*\*SCC of buccal mucosa extending to involve adjacent sites such as vestibule, gingiva, retromolar trigone ...

\*\*\*SCC >4 cm extending to involve bone/skin. OSCC: Oral squamous cell carcinoma, OSF: Oral submucous fibrosis



**Table 2: Comparative analyses of clinicopathologic characteristics between of oral squamous cell carcinoma cases with oral submucous fibrosis and without oral submucous fibrosis**

Parameters	Category	OSCC		Total cases (%)	P
		With OSF (%)	Without OSF (%)		
Broder's grading	Well	22 (36.7)	18 (30)	40 (66.7)	<0.05
	Moderate	8 (13.3)	-	8 (13.3)	
	Poor	-	12 (20)	12 (20)	
IFG	4-8	3 (5)	5 (8.3)	8 (13.3)	0.748
	9-12	11 (18.3)	10 (16.7)	21 (35)	
	13-16	16 (26.7)	15 (25)	31 (51.7)	
	7-12 points (no risk)	8 (13)	3 (5)	11 (18)	
MGSS	13-16 points (low risk)	11 (18)	14 (23)	25 (42)	0.247
	17-30 points (high risk)	11 (18)	13 (27)	24 (40)	
	Yes	12 (20)	18 (30)	30 (50)	
Lymph node metastasis	No	18 (30)	12 (20)	30 (50)	0.196
	Yes	6 (10)	6 (10)	12 (20)	
Lymph node with ECS	No	24 (40)	24 (40)	48 (80)	1.000
	Positive	6 (10)	7 (11.7)	13 (21.7)	
Surgical margins	Negative	24 (40)	23 (38.3)	47 (78.3)	1.000
	Yes	-	5 (8.3)	5 (8.3)	
Recurrence	No	30 (50)	25 (41.7)	55 (91.7)	0.052

IFG: Invasive front grading, MGSS: Martinez-Gimeno score system, ECS: Extracapsular spread, OSCC: Oral squamous cell carcinoma, OSF: Oral submucous fibrosis

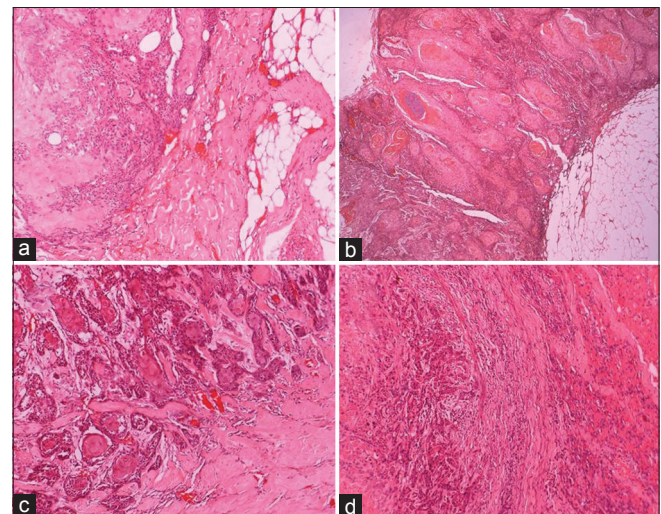
**Table 3: Comparative analyses of histopathological characteristics between oral squamous cell carcinoma patients with oral submucous fibrosis and without oral submucous fibrosis**

Parameters	Subtypes	OSCC		Total	P
		With OSF	Without OSF		
IVI	Negative	25 (41.7)	22 (36.7)	47 (78.3)	0.532
	Positive	5 (8.3)	8 (13.3)	13 (21.7)	
PI	Negative	15	13	28 (53.3)	0.796
	Positive	15	17	32 (46.7)	
TT (mm)	≤3	8 (13.3)	3 (5)	11 (18.3)	0.209
	>3-7	12 (20)	17 (28.3)	29 (48.3)	
	>7	10 (16.7)	10 (16.7)	20 (33.3)	
	Mean±SD	6.93±2.74	9.26±4.29	8.10±3.758	
TI	Uniform front	5 (8.3)	6 (10)	11 (18.3)	1.000
	Other	25 (41.7)	24 (40)	49 (81.7)	
II	Moderate-high	21 (35)	28 (46.7)	49 (81.7)	0.042
	Zero-low	9 (15)	2 (3.3)	11 (18.3)	
DK	1+2	9 (15)	10 (16.7)	19 (31.7)	1.000
	3+4	21 (35)	20 (33.3)	41 (68.7)	
NP	1+2	5 (8.3)	9 (15)	14 (23.3)	0.360
	3+4	25 (41.7)	21 (35)	46 (76.7)	
PI	1+2	6 (10)	5 (8.3)	11 (18.3)	1.000
	3+4	24 (40)	25 (41.7)	49 (81.7)	

\*Mann-Whitney U-test. IVI: Intravascular invasion, PNI: Perineural invasion, TT: Tumor thickness, TI: Tumor interphase, II: Inflammatory infiltration, DK: Degree of keratinization, NP: Nuclear polymorphism, PI: Pattern of invasion, OSCC: Oral squamous cell carcinoma, OSF: Oral submucous fibrosis, SD: Standard deviation

## DISCUSSION

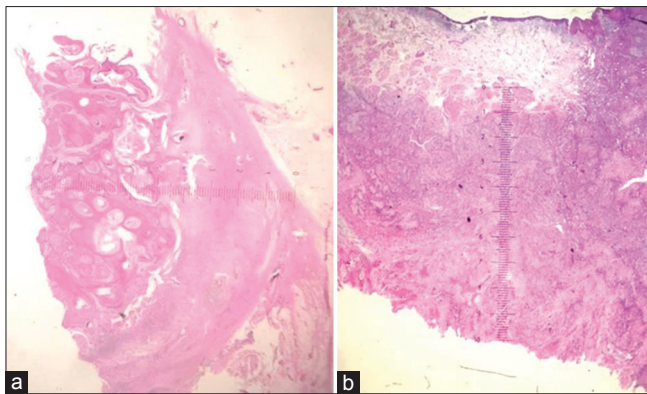
The highest incidence of oral cancer in the world was noted in the Indian subcontinent mainly due to the high prevalence of chewing smokeless tobacco and areca nut.<sup>[15]</sup> In this study, 68% of OSCC cases were chronic tobacco and areca nut chewers; majority of them were obsessed with commercially prepared areca nut preparations. The frequency of cases with tobacco and areca nut chewing



**Figure 2:** Pattern of invasion (a) pushing, well-delineated infiltrating border; (b) invasion by solid cords and strands of neoplastic cells; (c) invasion by small groups of cells or cords; (d) broad front invasion by single cells or small groups of cells (H&E, ×10)

were higher in OSCC-OSF than without OSF group. The number of patients who practiced the habits for 1–10 years' duration was more in OSCC-OSF than without OSF. However, there was no statistically significant difference between the two groups with respect to parameters such as habits and duration of habits. Analyses of related “habits” in 371 OSCC patients did not offer significant information on the individual roles of smokeless tobacco and areca nut; two well-established carcinogens by Chaturvedi *et al.* and Gadgil *et al.* noted that duration of tobacco- and betel nut-chewing habit was significantly higher in OSCC compared to OSCC-OSF. Habit of smoking and alcohol was predominant in OSCC patient compared to OSCC-OSF.<sup>[16]</sup>

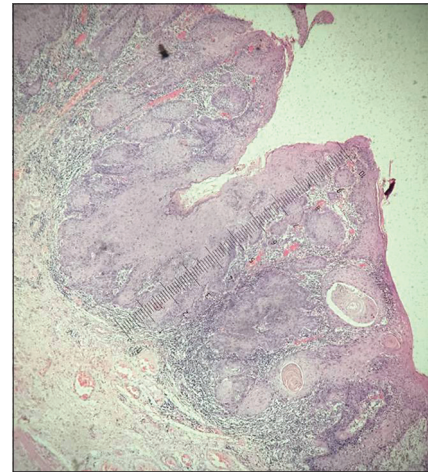
In this analysis out of 60 OSCC cases, 52% were  $\leq 45$  years. It indicates that a larger number of young patients are exposed early to tobacco and areca nut habituation which may imply a higher vulnerability in this area.<sup>[17]</sup> The habitual use of betel products from childhood, with duration, frequency and cumulative amount all being factors, enhances the risk of early development of OSF and with progression to more lethal variants increases the probability of transformation to frank OSCC.<sup>[18]</sup> Studies on OSCC-OSF states that individuals with OSCC-OSFs were younger when compared with OSCC alone.<sup>[3,16]</sup>



**Figure 3:** Measurement of tumor thickness using an ocular micrometer (a) oral squamous cell carcinoma-oral submucous fibrosis (b) oral squamous cell carcinoma (H&E,  $\times 4$ )

Similar findings were noted in this study. OSCC with OSF were younger (mean age 40.5 vs. 54 years) compared with OSCC alone.

In a study by Chaturvedi *et al.*, it is mentioned that OSCC-OSF was significantly common in male patients (M:F = 10:1) compared with OSCC alone (3.2:1). There was no significant difference in gender distribution between OSCC-OSF and OSCC without OSF.<sup>[3]</sup> Overall, in this



**Figure 4:** Measurement of tumor thickness using an ocular micrometer in a case of well-differentiated oral squamous cell carcinoma showing superficial invasion (H&E,  $\times 4$ )

**Table 4: Univariate analysis of clinicopathologic parameters of oral squamous cell carcinoma cases influencing pathologic nodal involvement**

Parameters assessed	Category	pN (positive)	pN (negative)	P
Tumor extension	Single*	10 (16.7)	24 (40)	0.001
	Multiple**	20 (33.3)	6 (10)	
Tumor type	Exophytic	25 (41.7)	16 (26.7)	0.025
	Endophytic	5 (8.3)	14 (23.3)	
Tumor size (cm)	1 ( $<2$ )	3 (5)	8 (13.3)	0.019
	2 (2-4)	6 (10)	12 (20)	
	3 ( $>4$ )	7 (11.7)	6 (10)	
	4***	14 (23.3)	4 (6.7)	
Clinical stage	1	-	7 (11.7)	0.000
	2	-	13 (21.7)	
	3	12 (20)	6 (10)	
	4	18 (30)	4 (6.7)	
Grade of differentiation	Well	17 (28.3)	23 (38.3)	0.014
	Moderate	4 (6.7)	4 (6.7)	
	Poor	9 (15)	3 (5)	
MGSS	7-12 points (no risk)	-	11 (18.3)	0.000
	13-16 points (low risk)	9 (15)	16 (26.7)	
	17-30 points (high risk)	21 (35)	3 (5)	
Tumor thickness (mm)	$\leq 3$	3 (5)	8 (13.3)	0.004
	$>3-7$	11 (18.3)	18 (30)	
	$>7$	16 (26.7)	4 (6.7)	
Tumor thickness	Mean $\pm$ SD	10.86 $\pm$ 4.63	6.73 $\pm$ 3.31	0.001@
IVI	Negative	17 (28.3)	30 (50)	0.000
	Positive	13 (21.7)	-	
PI	Negative	8 (13.3)	20 (33.3)	0.004
	Positive	22 (36.7)	10 (16.7)	

\*SCC of buccal mucosa only. \*\*SCC of buccal mucosa extending to involve adjacent sites such as vestibule, gingiva, retromolar trigone ... , \*\*\* SCC  $>4$  cms extending to involve bone/skin, @Mann-Whitney U-test. IVI: Intravascular invasion, PI: Perineural invasion, MGSS: Martinez-Gimeno score system, SD: Standard deviation

study also, OSCC was noted predominantly in males (90%) compared to females (10%) (M:F = 9:1). The higher incidence of OSCC among males (with/without OSF) can be explained by the fact that the incidence of chewing habit is higher among males.<sup>[3]</sup>

Most oropharyngeal cancers in India present in advanced stages of malignancy.<sup>[19]</sup> In this study, 52% were >4 cm and 67% of the tumors were in the advanced stage. There was no significant difference in tumor size and stage between OSCC with OSF and without OSF. Gadbail *et al.* found significant differences in clinical TNM staging between OSCC and OSCC-OSF. OSCC-OSF cases (46%) were significantly presented in early stage compared to OSCC (18%) whereas OSCC cases (82%) were significantly presented in advanced stage compared to OSCC-OSF (54%).<sup>[16]</sup> Chaturvedi *et al.* observed that 3 of every 4 patients with OSCC with OSF (74%) presented in early stages and nearly half of patients with OSCC (47%) presented in the advanced stage.<sup>[3]</sup>

There was a significant difference in the study groups with respect to tumor differentiation in this analysis. These findings were similar to Chaturvedi *et al.*'s observations that patients of OSCC-OSF are with better grade of tumor differentiation.<sup>[3]</sup> Zhou *et al.* reported a higher proportion of well-differentiated tumors in OSCC-OSF.<sup>[20]</sup> Gadbail *et al.* found that histological presentation of well-differentiated carcinoma was significantly more in OSCC-OSF compared to OSCC.<sup>[16]</sup>

Sarode and Sarode, in an observation of 381 OSCC cases, observed that 34 OSCC cases were associated with OSF, of which 30 cases showed well-differentiated tumor. Sarode and Sarode proposed a hypothesis to correlate atrophy, turnover rate and surface keratinization in OSF with degree of tumor differentiation in OSCC. High proliferative activity and basal cell hyperplasia in conjunction with rapid exfoliation of superficial cells and epithelial atrophy suggest that epithelial turnover is very high in OSF. Rapid rate of maturation of epithelium is evidenced by the existence of surface keratinization. Hence, these epithelial cells are genetically tuned for a higher turnover rate and keratin formation. In the process of OSF changing into malignancy, these altered epithelial cells possibly keep the genetic memory of rapid rate of maturation or differentiation leading to well-differentiated tumors.<sup>[1]</sup>

Cells at the invasive front of the tumors with and without OSF did not differ with regard to morphology. This raises the query, whether the extracellular matrix in at least a subset of OSF is different and resistant to normal invasive

mechanisms. This area needs further investigation.<sup>[10,11]</sup> The mean TT in OSCC with OSF group was lesser compared to OSCC without OSF (6.93 vs. 9.26 mm) though statistically insignificant. Probably dense fibrosis of stroma could be responsible for the tumors to be thin, in OSCC with OSF consequently exhibiting exophytic growth pattern with superficial invasive features. Many authors have reported TT to be significant prognostic factor for the occurrence of subclinical and clinical metastasis.<sup>[14,21]</sup> The present study also reveals the association between the microscopic TT and LNM. In this analysis, it was also observed that tumor extension, type, size, stage, tumor differentiation, MGSS score, TT, IVI and PNI emerged as significant factors associated with LNM. Similar findings have been mentioned in the literature.<sup>[3,13,22]</sup>

Cervical LNM is one of the most important prognostic factors in OSCC, and the presence of ECS is a marker of poor prognosis.<sup>[23]</sup> In this study, 50% of the cases showed LNM, with 20% of the cases showing ECS; all were in advanced stage. LNM were seen to a great extent in OSCCs than in OSCC-OSF (45% vs. 30%). Due to smaller sample, the actual difference could not be highlighted as statistically significant. Chaturvedi *et al.* observed that patients with OSCC-OSF were less likely to present with a metastatic neck node compared to OSCC. Even in advanced stage disease, OSCC-OSF had less chance of metastasis and ECS. They also found that the risk of LNM in the absence of OSF is higher.<sup>[3]</sup> A similar observation was reported by Zhou *et al.* who showed that patients with OSCC-OSF had no neck nodal metastases.<sup>[20]</sup> Gadbail *et al.* also found that regional LNM was significantly higher in OSCC compared to OSCC-OSF<sup>[16]</sup> and believed that this difference exists because of the protective effect of OSF. They hypothesize that the lesser incidence of LNM is because of the blockage of submucosal lymphatics as a result of fibrosis.<sup>[3]</sup> It is also expected that reduced and blocked submucosal vascularity may be a beneficial effect on overall prognosis.<sup>[24]</sup> Singh *et al.* have further stated that nodal metastasis is significantly less in T4 stage patients with OSF where the percentages were 28.6% versus 81.1% in OSCC without OSF.<sup>[25]</sup> Siriwardena *et al.* showed that nodal metastasis was less in patients with OSF compared to the ones without (22.6% vs. 30.8%).<sup>[26]</sup> However, OSCC originating from OSF is clinically more invasive and also exhibits higher metastasis; this has been stated by Guo *et al.*<sup>[9]</sup>

### Limitations

Limitations of this study were small sample size and data regarding other parameters such as disease-free survival, overall survival and quality of life (QOL) issues which could not be retrieved completely for evaluation. Assessing these



along with all the clinicopathologic features would have helped to precisely define OSCC-OSF as a distinct entity or otherwise, so as to formulate different treatment plan for this distinct group, as the chances of recurrence or second primary in the upper aerodigestive tract are more with OSF. Prospective studies with large sample size will eliminate the selection bias and may emphasize the differences between the study groups.

## CONCLUSION

The rate of occurrence of OSF and OSCC arising from this disease in this region of the world shows an ample range of clinical forms and behavior. Observations of this study suggest that OSCC patients with OSF are younger males with better grade of tumor differentiation. Risk factors and other clinical and pathological parameters did not differ significantly between the groups. Hence, observations of this study are not that supportive to consider OSCC arising in the background OSF as a distinct clinicopathologic entity.

Although OSCC-OSF may have a lower rate of LNM as mentioned by several authors, they have a higher chance of local recurrence and second primary cancer as OSF is considered as a premalignant condition. Furthermore, it is difficult to treat the QOL issues because trismus associated with OSF adds significant morbidity and occasional mortality to this group. Hence, OSCC with OSF should not be considered as a less destructive cancer and should not be treated less aggressively.

## Acknowledgment

Authors express their thanks to ICMR STS – 2014.

## Financial support and sponsorship

This study was financially supported by Indian Council of Medical Research ICMR-STs 2014 (2014-00378).

## Conflicts of interest

There are no conflicts of interest.

## REFERENCES

1. Sarode SC, Sarode GS. Better grade of tumor differentiation of oral squamous cell carcinoma arising in background of oral submucous fibrosis. *Med Hypotheses* 2013;81:540-3.
2. Auluck A, Rosin MP, Zhang L, Sumanth KN. Oral submucous fibrosis, a clinically benign but potentially malignant disease: Report of 3 cases and review of the literature. *J Can Dent Assoc* 2008;74:735-40.
3. Chaturvedi P, Vaishampayan SS, Nair S, Nair D, Agarwal JP, Kane SV, *et al.* Oral squamous cell carcinoma arising in background of oral submucous fibrosis: A clinicopathologically distinct disease. *Head Neck* 2013;35:1404-9.
4. Tilakaratne WM, Ekanayaka RP, Warnakulasuriya S. Oral submucous fibrosis: A historical perspective and a review on etiology and pathogenesis. *Oral Surg Oral Med Oral Pathol Oral Radiol* 2016;122:178-91.
5. Murti PR, Bhonsle RB, Pindborg JJ, Daftary DK, Gupta PC, Mehta FS, *et al.* Malignant transformation rate in oral submucous fibrosis over a 17-year period. *Community Dent Oral Epidemiol* 1985;13:340-1.
6. Ray JG, Ranganathan K, Chattopadhyay A. Malignant transformation of oral submucous fibrosis: Overview of histopathological aspects. *Oral Surg Oral Med Oral Pathol Oral Radiol* 2016;122:200-9.
7. Chattopadhyay A, Ray JG. Molecular pathology of malignant transformation of oral submucous fibrosis. *J Environ Pathol Toxicol Oncol* 2016;35:193-205.
8. Chourasia NR, Borle RM, Vastani A. Concomitant association of oral submucous fibrosis and oral squamous cell carcinoma and incidence of malignant transformation of oral submucous fibrosis in a population of central India: A retrospective study. *J Maxillofac Oral Surg* 2015;14:902-6.
9. Guo F, Jian XC, Zhou SH, Li N, Hu YJ, Tang ZG, *et al.* A retrospective study of oral squamous cell carcinomas originated from oral submucous fibrosis. *Zhonghua Kou Qiang Yi Xue Za Zhi* 2011;46:494-7.
10. Ekanayaka RP, Tilakaratne WM. Oral submucous fibrosis: Review on mechanisms of pathogenesis and malignant transformation. *J Carcinog Mutagen* 2013;S5:002.
11. Ekanayaka RP, Tilakaratne WM. Oral submucous fibrosis: Review on mechanisms of malignant transformation. *Oral Surg Oral Med Oral Pathol Oral Radiol* 2016;122:192-9.
12. Bryne M, Koppang HS, Lilleng R, Kjaerheim A. Malignancy grading of the deep invasive margins of oral squamous cell carcinomas has high prognostic value. *J Pathol* 1992;166:375-81.
13. Martínez-Gimeno C, Rodríguez EM, Vila CN, Varela CL. Squamous cell carcinoma of the oral cavity: A clinicopathologic scoring system for evaluating risk of cervical lymph node metastasis. *Laryngoscope* 1995;105:728-33.
14. Kane SV, Gupta M, Kakade AC, D' Cruz A. Depth of invasion is the most significant histological predictor of subclinical cervical lymph node metastasis in early squamous carcinomas of the oral cavity. *Eur J Surg Oncol* 2006;32:795-803.
15. Warnakulasuriya S. Global epidemiology of oral and oropharyngeal cancer. *Oral Oncol* 2009;45:309-16.
16. Gadgil AR, Chaudhary M, Gawande M, Hande A, Sarode S, Tekade SA, *et al.* Oral squamous cell carcinoma in the background of oral submucous fibrosis is a distinct clinicopathological entity with better prognosis. *J Oral Pathol Med* 2017;46:448-53.
17. Acharya S, Tayaar AS. Analysis of clinical and histopathological profiles of oral squamous cell carcinoma in young Indian adults: A retrospective study. *J Dent Sci* 2012;7:224-30.
18. Mohiuddin S, Fatima N, Hosein S, Fatima N. High risk of malignant transformation of oral submucous fibrosis in Pakistani females: A potential national disaster. *J Pak Med Assoc* 2016;66:1362-6.
19. Misra V, Singh PA, Lal N, Agarwal P, Singh M. Changing pattern of oral cavity lesions and personal habits over a decade: Hospital based record analysis from Allahabad. *Indian J Community Med* 2009;34:321-5.
20. Zhou S, Qu X, Yu Z, Zhong L, Ruan M, Ma C, *et al.* Survivin as a potential early marker in the carcinogenesis of oral submucous fibrosis. *Oral Surg Oral Med Oral Pathol Oral Radiol Endod* 2010;109:575-81.
21. Woolgar JA. Histopathological prognosticators in oral and oropharyngeal squamous cell carcinoma. *Oral Oncol* 2006;42:229-39.
22. Martínez-Gimeno C, Molinero AP, Castro V, Sastre MJ, Castro EE, Aguirre-Jaime A, *et al.* Prospective validation of the Martínez-Gimeno clinicopathologic scoring system (MGSS) for evaluating risk of cervical lymph node metastases of squamous cell carcinoma of the oral cavity. *Head Neck* 2005;27:320-5.
23. Woolgar JA, Rogers SN, Lowe D, Brown JS, Vaughan ED. Cervical lymph node metastasis in oral cancer: The importance of even microscopic extracapsular spread. *Oral Oncol* 2003;39:130-7.
24. Tilakaratne WM, Klinnikowski MF, Saku T, Peters TJ, Warnakulasuriya S. Oral submucous fibrosis: Review on aetiology and

- pathogenesis. *Oral Oncol* 2006;42:561-8.
25. Singh G, Rana AS, Kumar A, Prajapati A, Kumar S, Singh P. Nodal involvement in Oral Squamous Cell Carcinoma (SCC) patients with and without Oral Sub Mucous Fibrosis (OSMF): A Comparative Study. *Journal of Oral Biology and Craniofacial Research* 2017;7: 171-77.
26. B. S. M. S. Siriwardena, K. L. T. D. Jayawardena, N. H. Senarath, and W. M. Tilakaratne. An Evaluation of Clinical and Histopathological Aspects of Patients with Oral Submucous Fibrosis in the Background of Oral Squamous Cell Carcinoma. *BioMed Research International*, vol. 2018, Article ID 4154165, 2018. p. 7. <https://doi.org/10.1155/2018/4154165>.